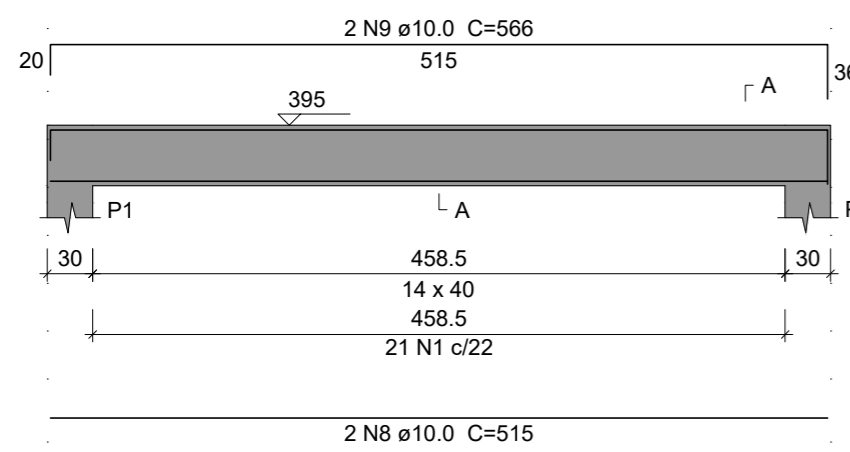
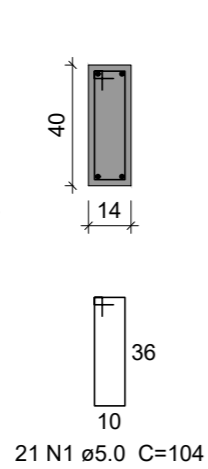


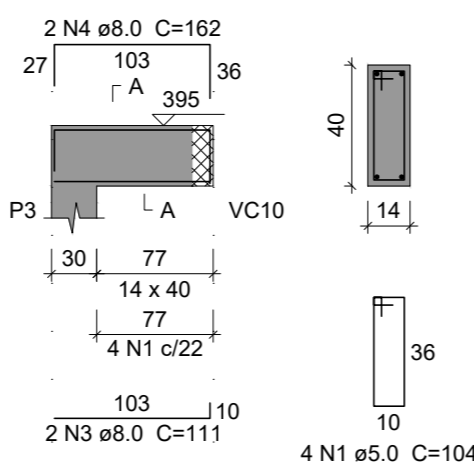
VC1
ESC 1:50



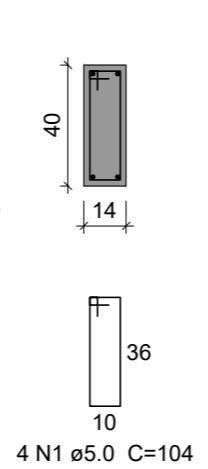
SEÇÃO A-A
ESC 1:25



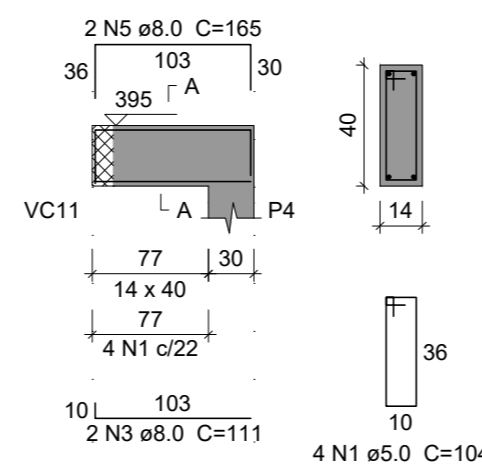
VC2
ESC 1:50



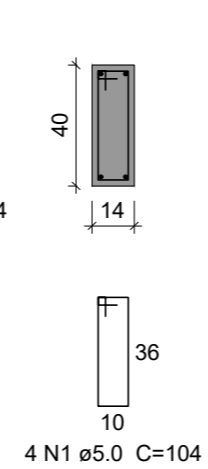
SEÇÃO A-A
ESC 1:25



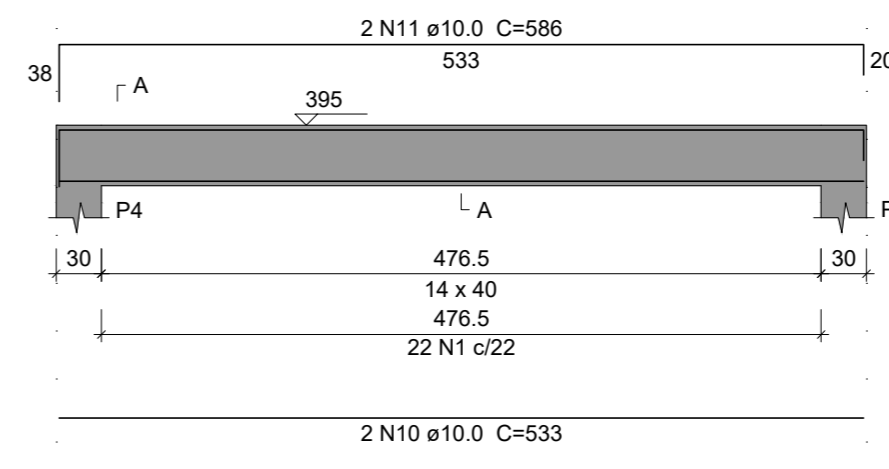
VC3
ESC 1:50



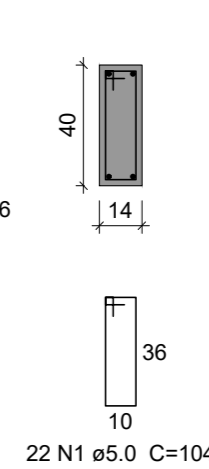
SEÇÃO A-A
ESC 1:25



VC4
ESC 1:50



SEÇÃO A-A
ESC 1:25

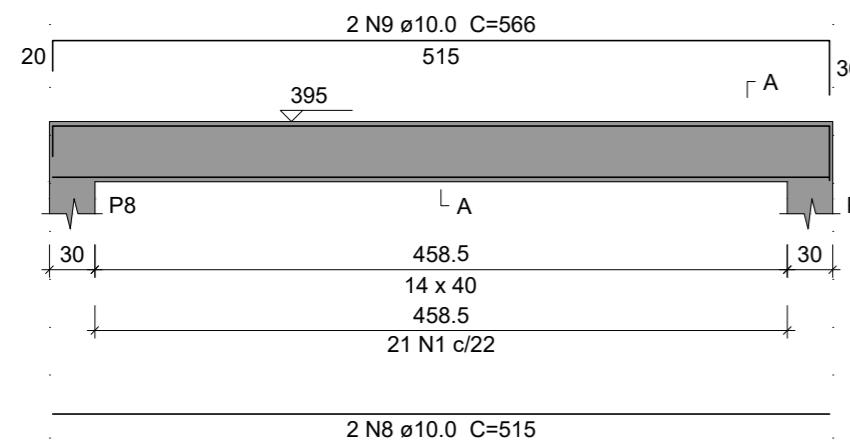


Relação do aço

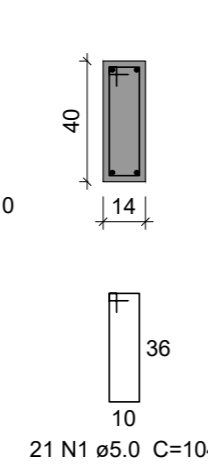
8xP1	VC1	VC2
VC3	VC4	VC5
VC6	VC7	VC8
VC9	VC10	VC11
VC12		

AÇO	N	DIAM (mm)	QUANT	C.UNIT (cm)	C.TOTAL (cm)
CA60	1	5.0	174	104	18096
	2	5.0	224	84	18816
CA50	3	8.0	8	111	888
	4	8.0	4	162	648
	5	8.0	4	165	660
	6	8.0	12	401	4812
	7	8.0	4	447	1788
	8	10.0	4	515	2060
	9	10.0	4	566	2264
	10	10.0	4	533	2132
	11	10.0	4	586	2344
	12	10.0	48	333	15984

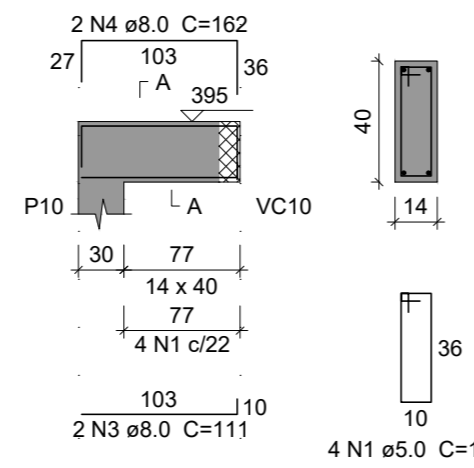
VC5
ESC 1:50



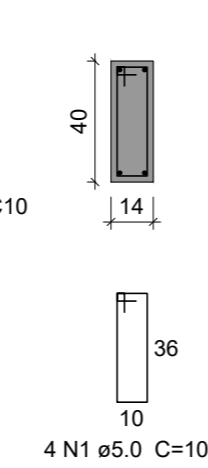
SEÇÃO A-A
ESC 1:25



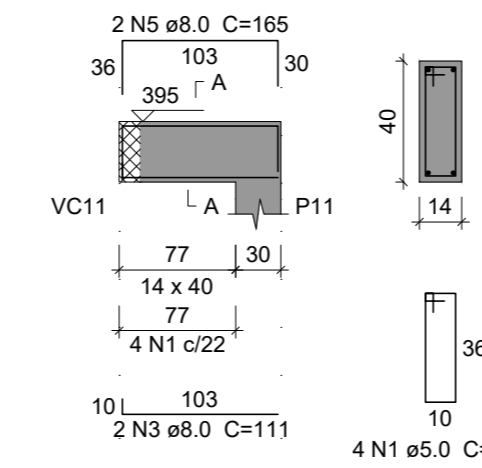
VC6
ESC 1:50



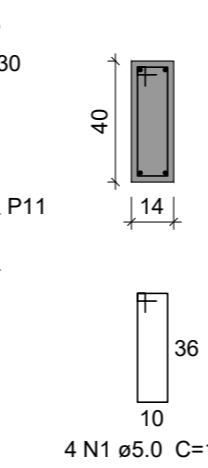
SEÇÃO A-A
ESC 1:25



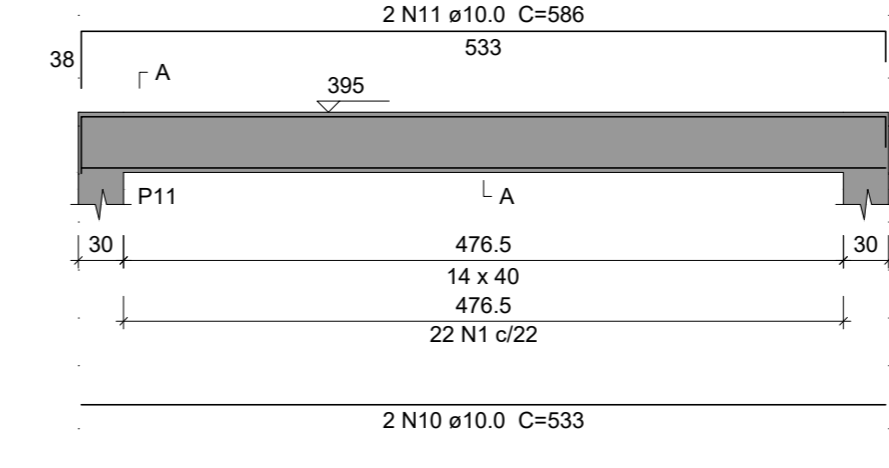
VC7
ESC 1:50



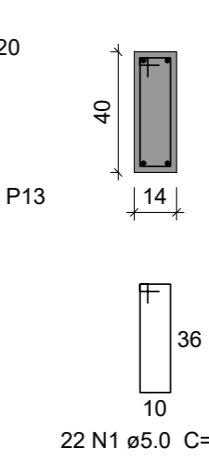
SEÇÃO A-A
ESC 1:25



VC8
ESC 1:50



SEÇÃO A-A
ESC 1:25

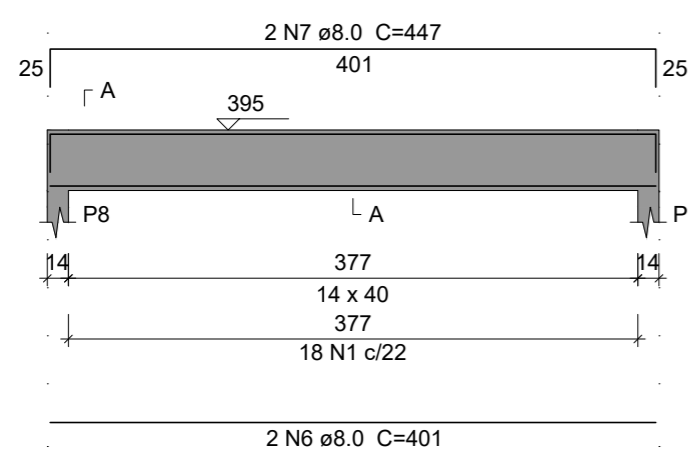


Resumo do aço

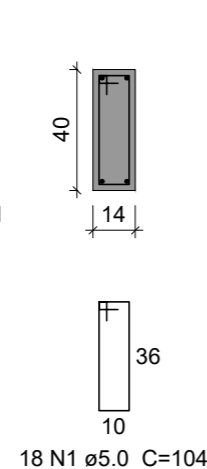
AÇO	DIAM (mm)	C.TOTAL (m)	PESO + 10 % (kg)
CA50	8.0	88	38.2
	10.0	247.9	168.1
CA60	5.0	369.2	62.6
PESO TOTAL (kg)			
CA50		206.3	
CA60		62.6	

Volume de concreto (C-25) = 3.19 m³
Área de forma = 62.67 m²

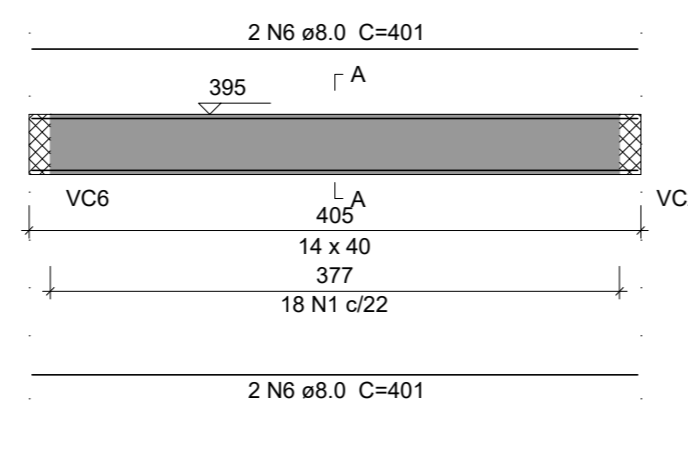
VC9
ESC 1:50



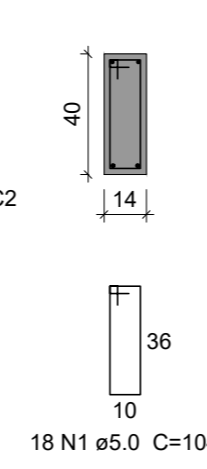
SEÇÃO A-A
ESC 1:25



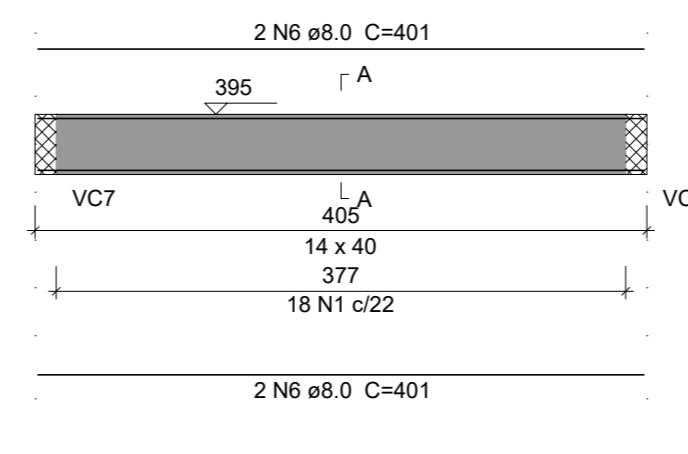
VC10
ESC 1:50



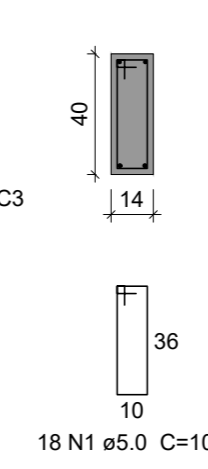
SEÇÃO A-A
ESC 1:25



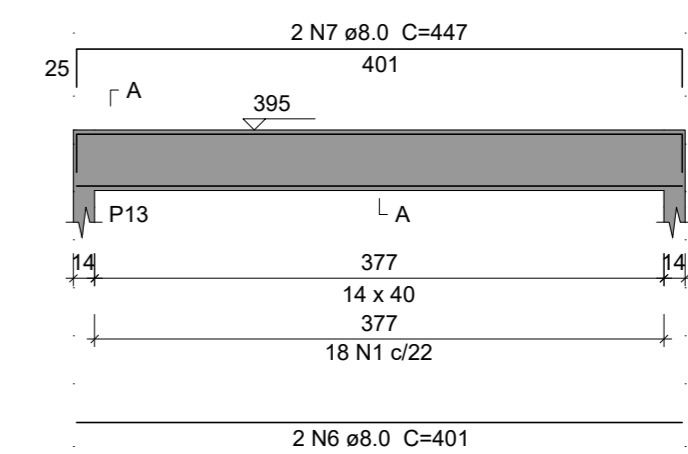
VC11
ESC 1:50



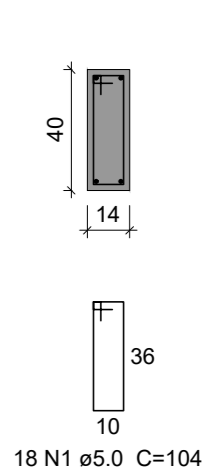
SEÇÃO A-A
ESC 1:25



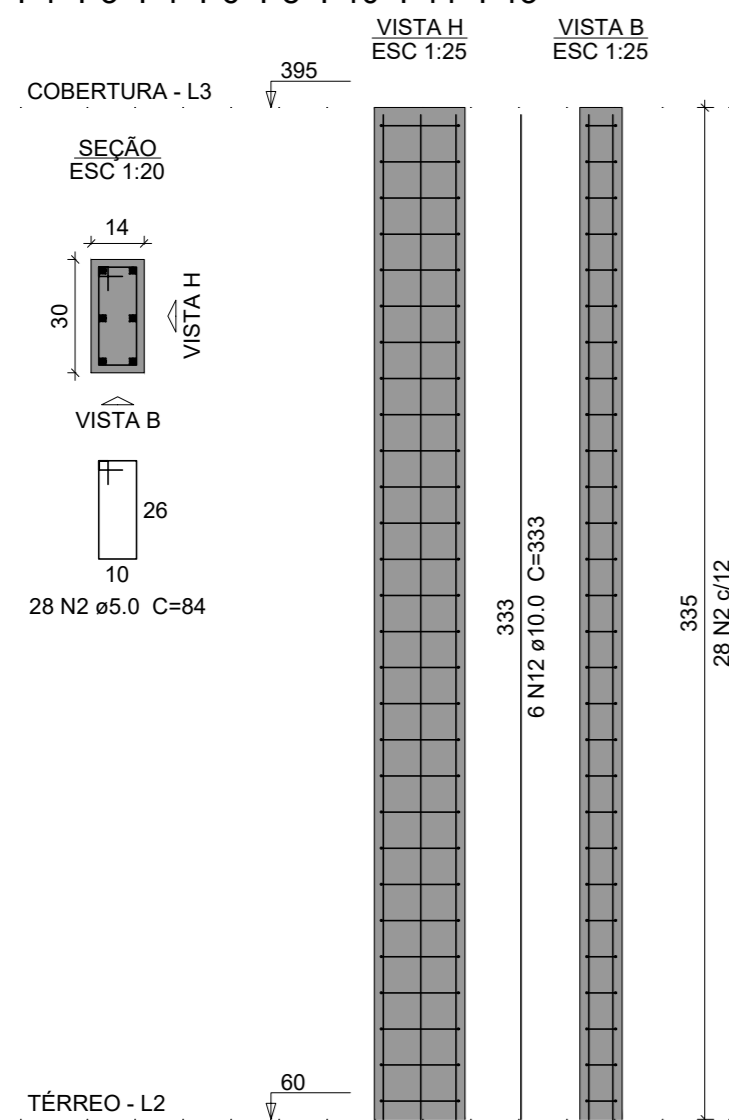
VC12
ESC 1:50



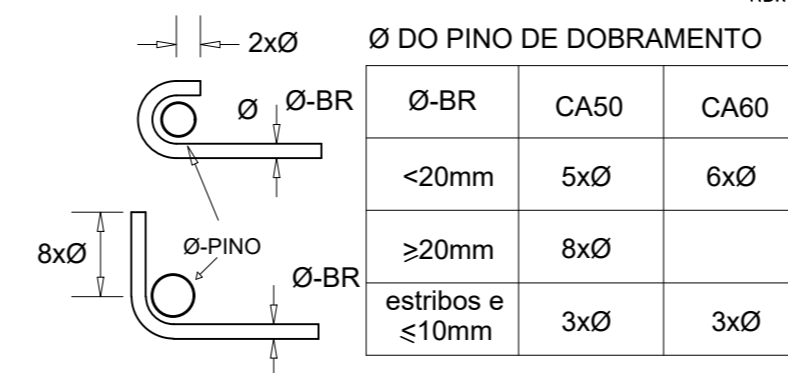
SEÇÃO A-A
ESC 1:25



P1=P3=P4=P6=P8=P10=P11=P13



RAIO (Ø) DE DOBRAMENTO PARA GANCHOS
NBR 6118



NORMAS UTILIZADA PARA CÁLCULO E DETALHAMENTO DO PROJETO:

NBR 6118	Projeto e Execução de Estruturas de Concreto Armado
NBR 6122	Projeto e Execução de Fundações
NBR 7480	Barras e fios de aço destinados a armaduras de concreto armado - Especificação
NBR 12655	Concreto - Preparo, Controle e Recebimento
NBR 6123	Forças devido ao vento em edificações
NBR 6120	Cargas para cálculo de estruturas de edificações

DAS RESPONSABILIDADES:

- A RESPONSABILIDADE TÉCNICA RESTRINGE-SE ÚNICA E EXCLUSIVAMENTE A AUTORIA DO PROJETO.
- NO CASO DE ALTERAÇÃO DESSE PROJETO DURANTE A EXECUÇÃO, SEM CONSULTA PRÉVIA OU APROVAÇÃO DO PROJETISTA, ESTE SE EXIME DE TODA E QUALQUER RESPONSABILIDADE POR VICIOS E/OU PATOLOGIAS

Revisão N°	Descrição	Data
00	EMISSÃO PROJETO FUNDAÇÕES	27/04/2022

Obra **AMPLIAÇÃO DE CONSTRUÇÃO**
Rua José Soares Hungria, 489 - Jardim Marabá, Itapetininga/SP

Projeto **PHILIPPE LOIOLA**
CREA: 5070614915 - SP

Cliente **CÂMARA MUNICIPAL DE ITAPETININGA**

Projeto **ESTRUTURA DE CONCRETO**

Conteúdo da folha

PROJETO ESTRUTURAL COMPLETO
Det. Armaduras do Pav. Cobertura (Vigas e Pilares)

Folha **06**

N° do desenho ITA-CMI-EST-006-00

Data	Escala	Desenho	Conferência
27/04/2022	INDICADA	GABRIEL H. A. V. PIRES	PHILIPPE LOIOLA

